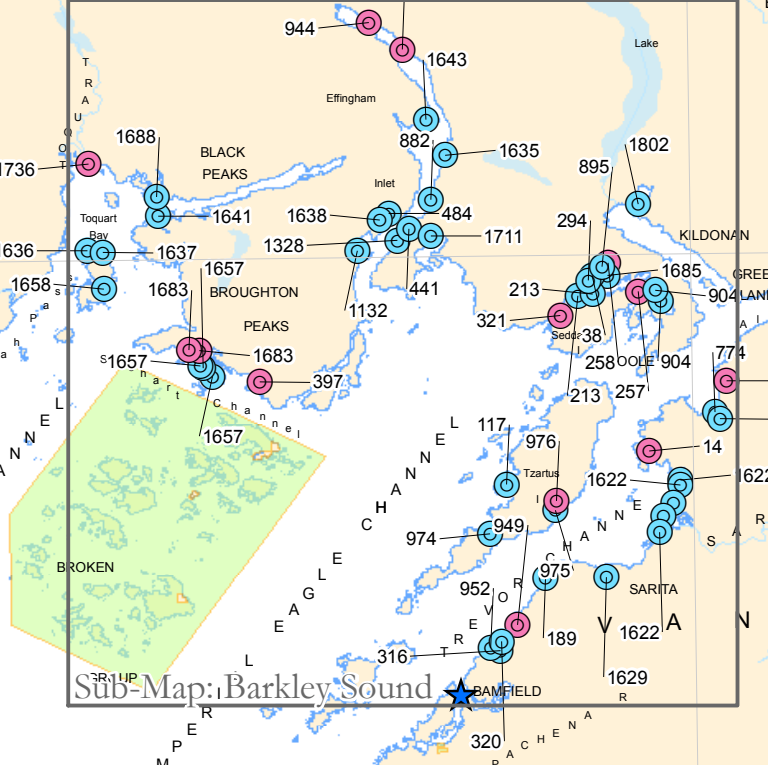
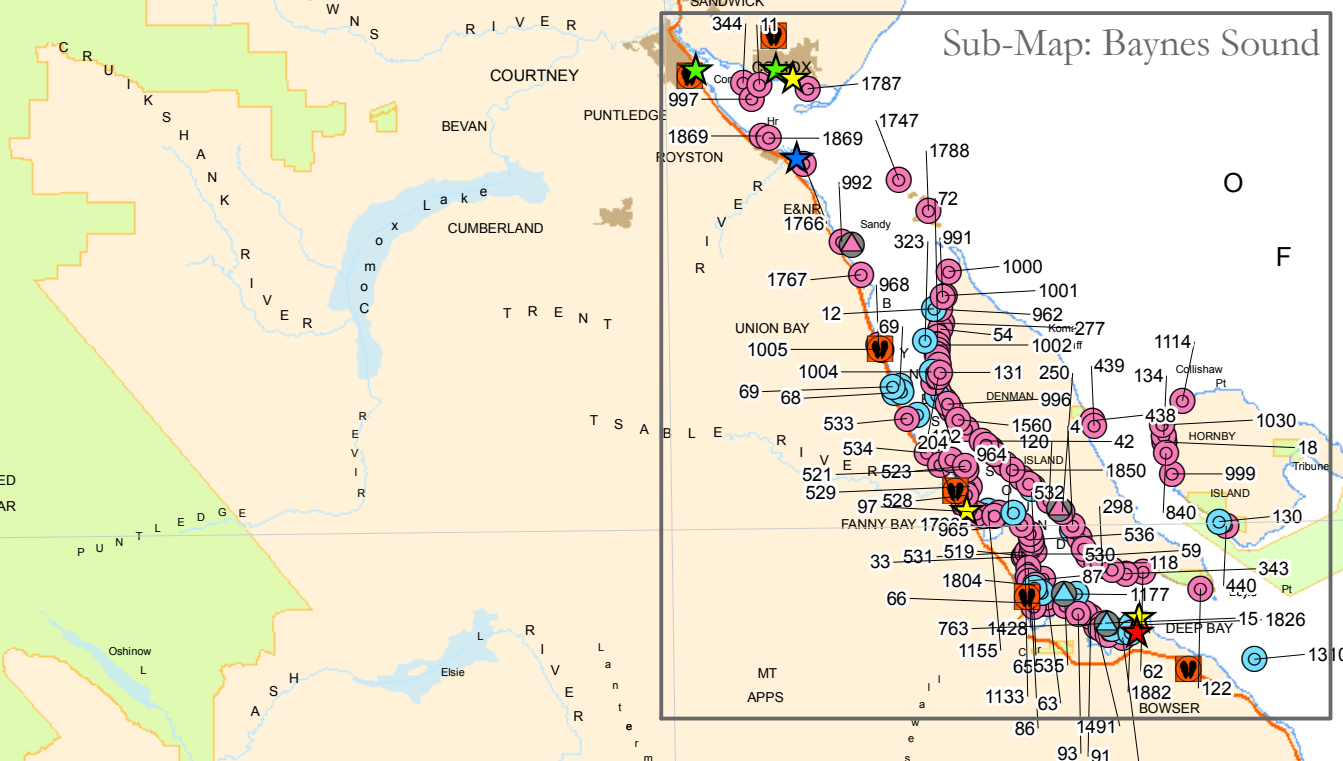
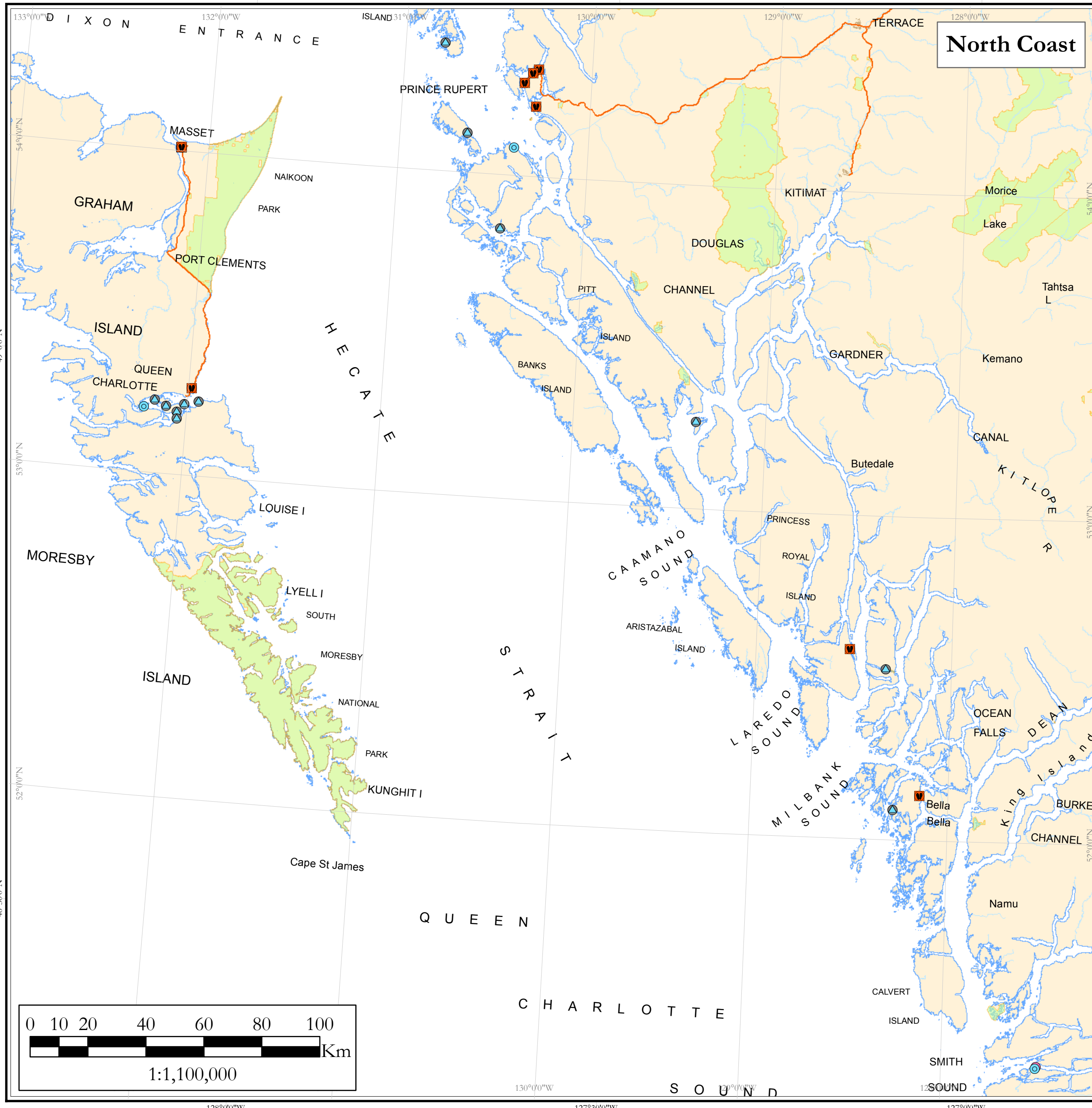
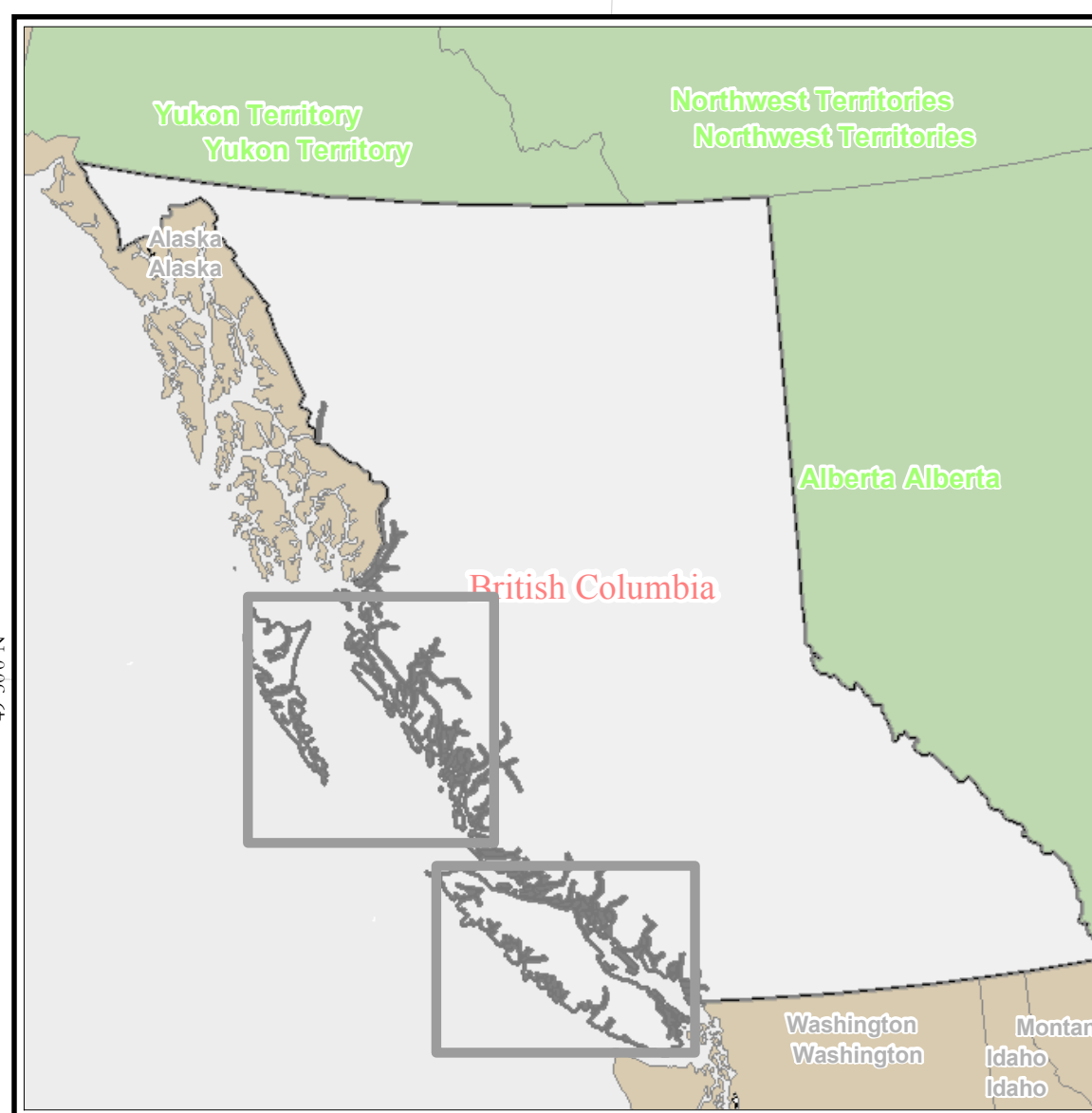
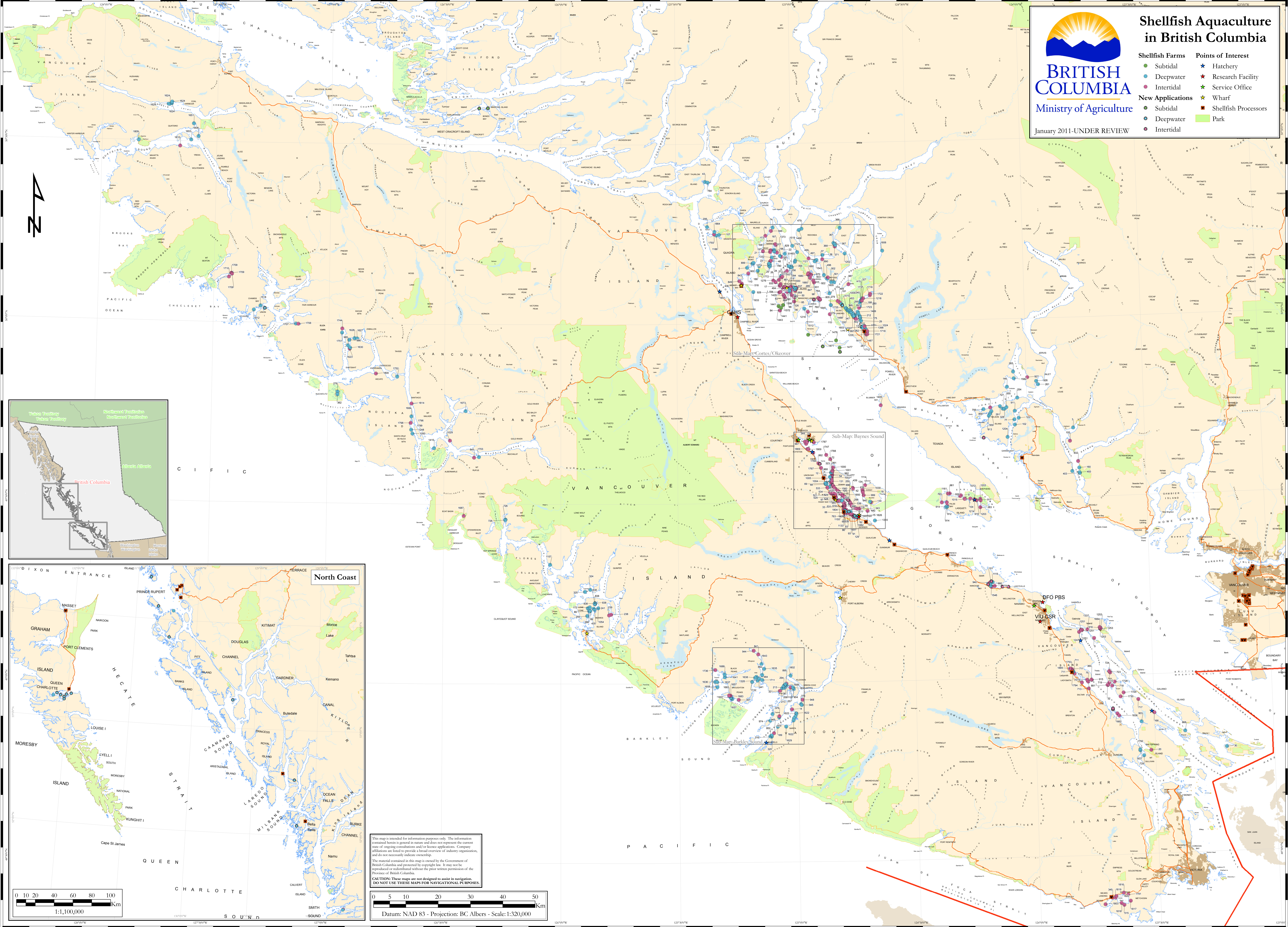


Shellfish Aquaculture in British Columbia

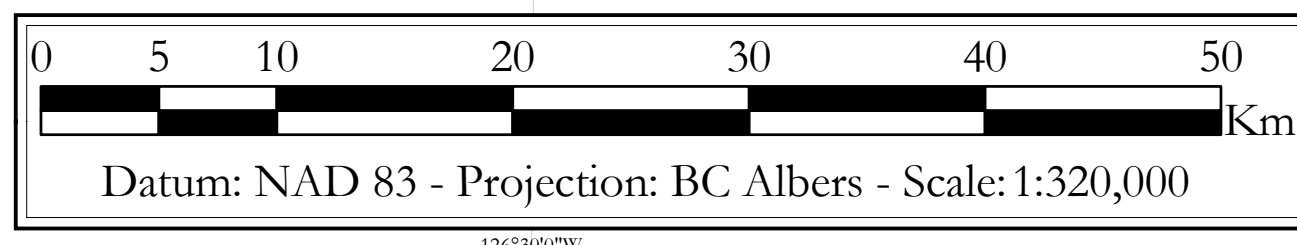
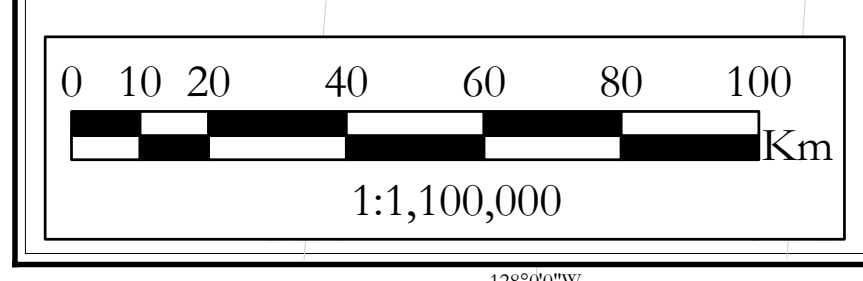
- | | |
|-------------------------|---------------------------|
| Shellfish Farms | Points of Interest |
| ● Subtidal | ★ Hatchery |
| ● Deepwater | ★ Research Facility |
| ● Intertidal | ★ Service Office |
| New Applications | ★ Wharf |
| ● Subtidal | ★ Shellfish Processors |
| ● Deepwater | ■ Park |
| ● Intertidal | |



This map is intended for information purposes only. The information contained herein is general in nature and does not represent the current state of ongoing consultations and/or licence applications. Company affiliations are listed to provide a broad overview of industry organizations, and do not necessarily indicate ownership.

The material contained in this map is owned by the Government of British Columbia and protected by copyright law. It may not be reproduced or redistributed without the prior written permission of the Province of British Columbia.

CAUTION: These maps are not designed to assist in navigation. **DO NOT USE THESE MAPS FOR NAVIGATIONAL PURPOSES.**



Datum: NAD 83 - Projection: BC Albers - Scale: 1:320,000