

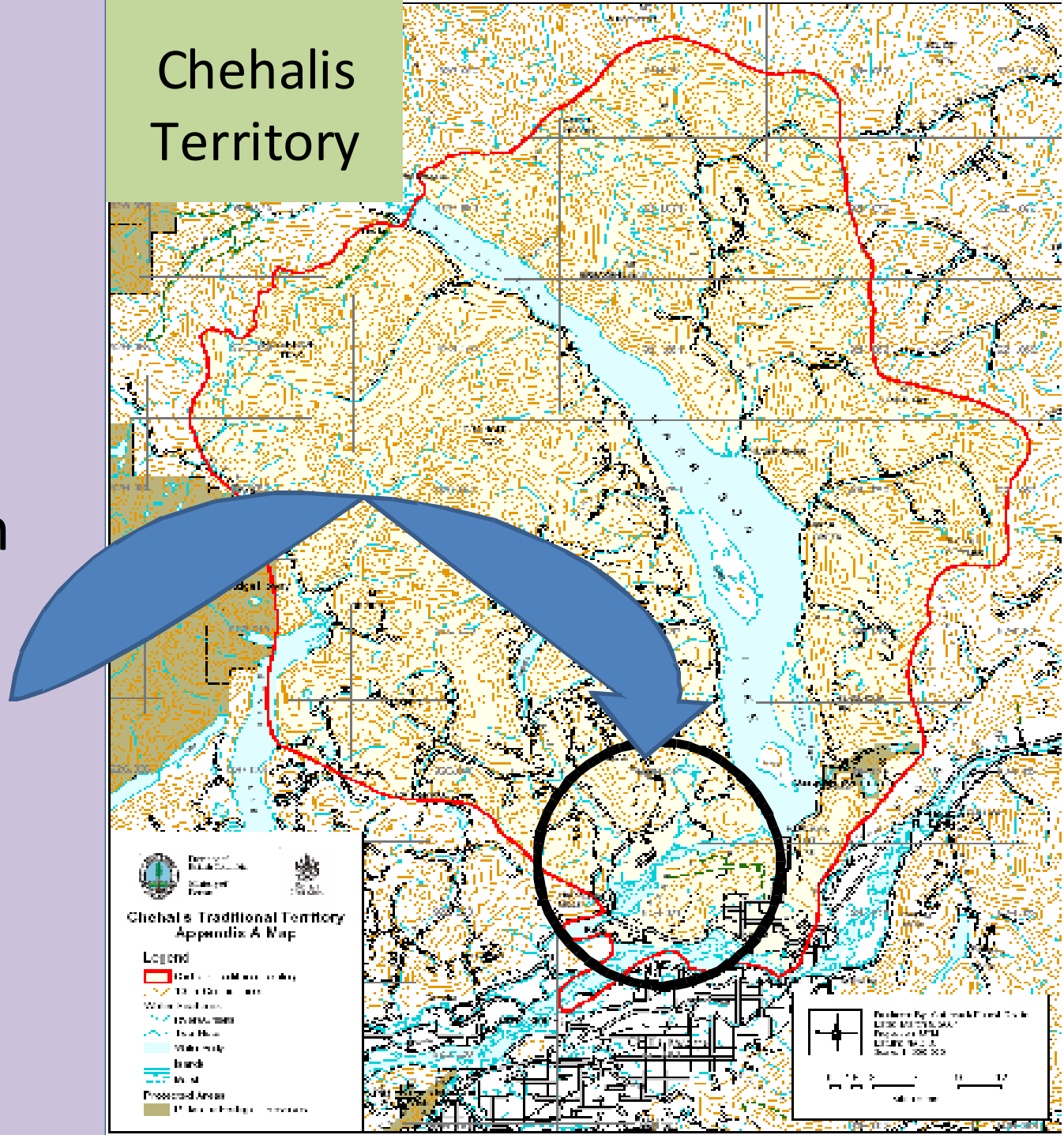
The Economics of Good Stewardship



A Chehalis Sustainable Fisheries Model

Chehalis
shares
territory with
the greatest
concentration
of all 5 salmon
species in the
Fraser
Watershed

Chehalis Territory



Key Statistics

- The Sts'ailes (or Chehalis Indian Band) are Upper Sto:lo – closest neighbor is Scowlitz Band
- Approximately 1,000 on Reserve - register more than 200 Chehalis fishers
- Salmon fisheries are concentrated on the Harrison, Chehalis and adjacent Fraser River
- Sockeye, Chum, Pink, Coho, and Chinook fisheries span 9 months a year or more
- More than a million pounds of commercial salmon and caviars produced annually
- Chehalis employs 50 – 80 seasonal staff

Our Chehalis Vision – A prosperous, healthy, and sustainable fishery



“... we are compelled to ensure that systems are in place to protect the watershed, the salmon, and our fishery, because it is who we are.”

Chief William Charlie
Chehalis Indian Band



Regulators, development, conservation and other users are drawn to the fishery



Band governance provides basis for co-management and focus for the stewardship vision

Band
Council



“Our fishermen are our
community’s connection to
the fish.”

Chehalis Councillor James Leon

Fish and Wildlife Portfolio



The *Sts'ailes* Development Corporation provides for administration of Community benefits

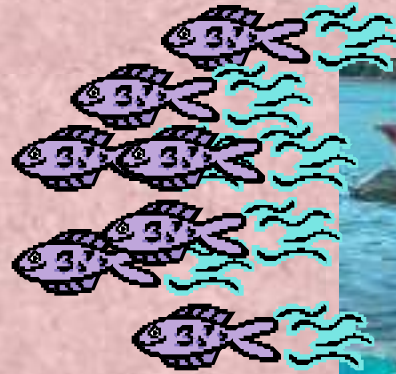


Employment and conservation are underpinnings of Community stewardship





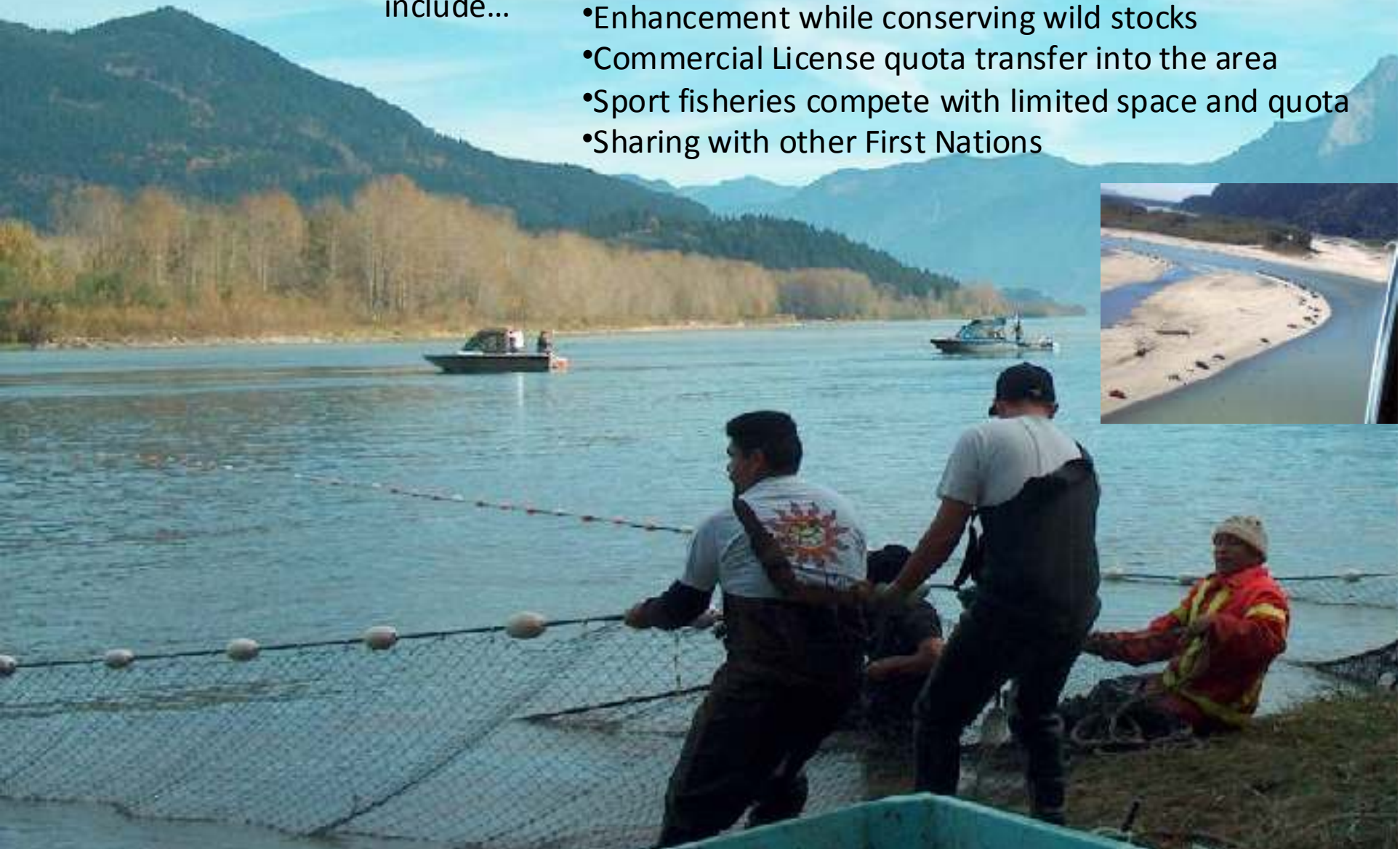
A shared stewardship vision commits fishers and local Communities to a common direction



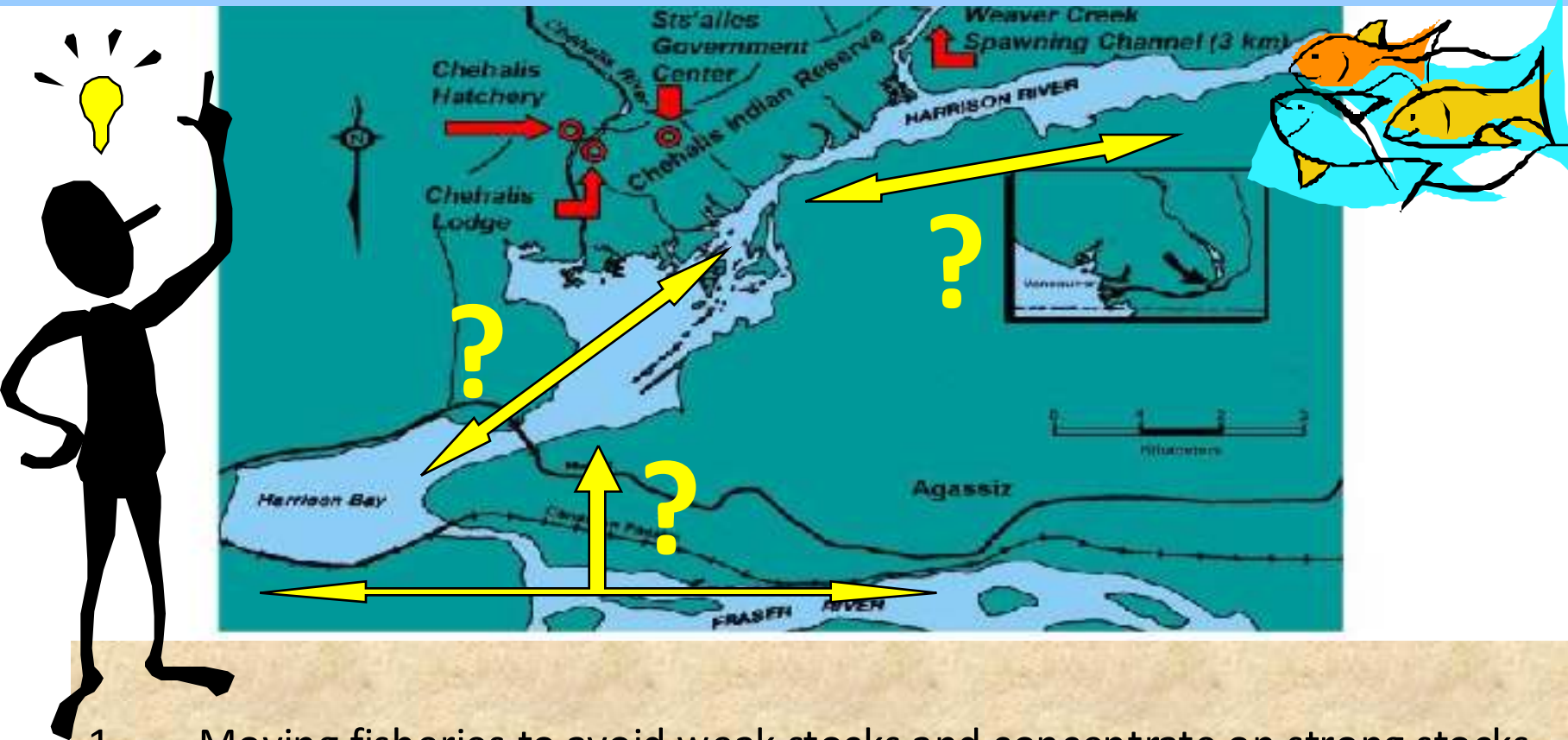
Competing interests occupy Chehalis with co-managers

These
include...

- Balancing FSC with economic interests
- Enhancement while conserving wild stocks
- Commercial License quota transfer into the area
- Sport fisheries compete with limited space and quota
- Sharing with other First Nations



Moving beyond the mixed-stock fishery allows strategic management of resources among competing interests



1. Moving fisheries to avoid weak stocks and concentrate on strong stocks
1. Developing fishery assessment tools that rely on local and reliable measures of in season abundance

A new angler trail protects sensitive Band lands and begins to manage access issues with sport fishery



Enhancement supports selective terminal fisheries while conserving wild stocks



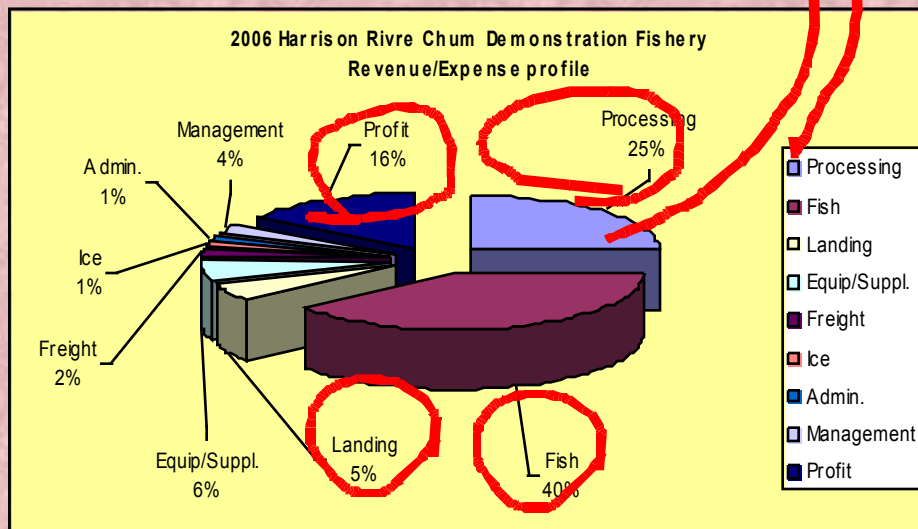
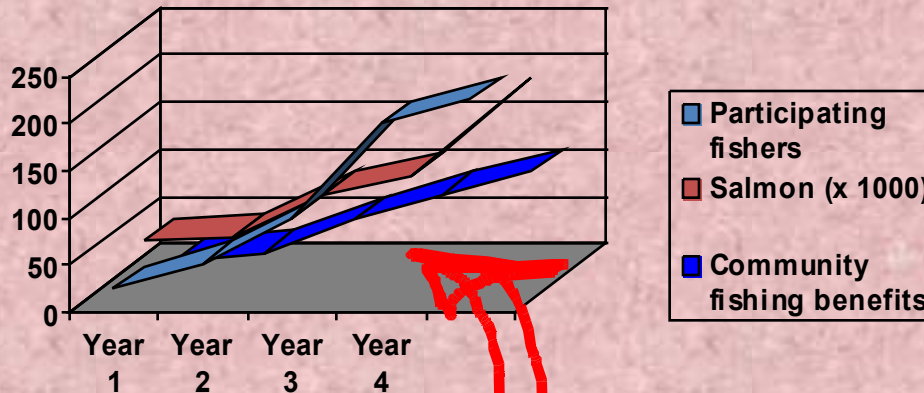
Community *ESSR* fisheries manage the surpluses and protect spawning escapements



The emerging fisheries "Co-op" is a contract between fishermen and communities

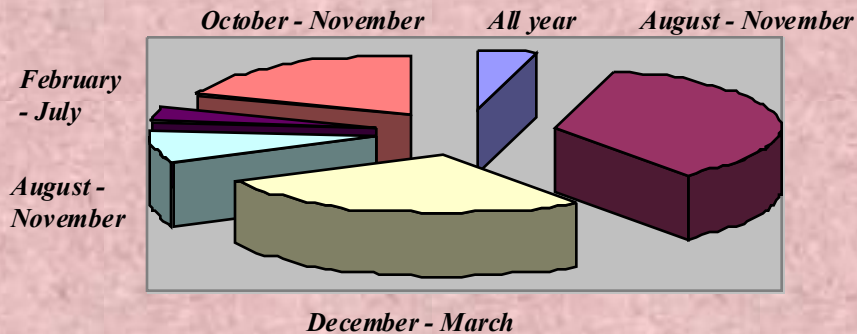
Less wholesale and high-grading
+ more local processing and value
 = More fishermen and salmon production

Harrison River Coop Benefit Model



Our school of fisheries is designed to optimize local benefits from seasonal employment and ensures sustainability and traceability

Local fisheries employment profile



Ideas to build on:

- Generalist-training (6 technologies)
- New focus on quality, traceability, local “value-adding”, branding and sales
- E.I. strategy for fishers
- Business planning for cooperative members
- Boat operations and safety
- Certification for fishers and landing site workers

“River to Plate” a watershed First Nations strategy describes principles for prosperous fisheries



*Tactical advantage
from the inland catch*



Web-based warehousing is one of several tools for managing a healthy local trade environment



- **Off the river-bank sales** – is a Community fish-trade governance strategy to manage brokering
- **Collective marketing supports investment** in infrastructure, local business and stewardship
- **Principles are imbedded in contracts with fishers** – espousing quality, value, and sustainability



Traceability programs ensure best quality and marginalize unregulated fisheries

Roe		
Green Wt. (lbs)	Finish Wt. (lbs)	Recovery (%)
0		0.0%
25		80.0%
29		51.7%
164		75.0%
347		74.6%
827		81.0%
459		78.6%
523		85.7%
637		84.5%

Harvest Date

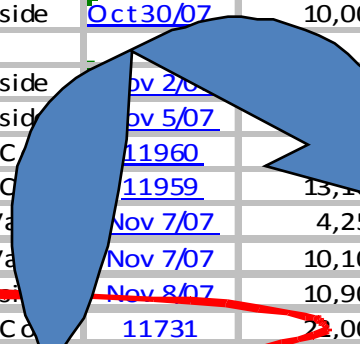
05/10
09/10
15/10
19/10
22/10

23/10/2007
24/10/2007
26/10/2007
29/10/2007

02/11/2007
05/11/2007
06/11/2007
06/11/2007
07/11/2007
07/11/2007
08/11/2007
09/11/2007
09/11/2007

13/11/2007
14/11/2007
15/11/2007
16/11/2007
19/11/2007
20/11/2007
21/11/2007
23/11/2007
27/11/2007
28/11/2007
30/11/2007
05/12/2007

Harvest Date	Lot	Carrier	Weight (lbs)	Estimate	Recovery (%)
23/10/2007	WC 102307	12	19,400	Est	72.1%
24/10/2007	WC 102407	12	9,950	Est	74.9%
26/10/2007	WC 102607	12	9,000	Est	70.4%
29/10/2007	WC 102907	12	10,000	Est	70.7%
02/11/2007	CH 110207	9	0	Est	73.6%
05/11/2007	CH 110507	12	0	Est	70.0%
06/11/2007	CH 110607	16	0	Est	74.6%
06/11/2007	HR 110607	15	13,100	Est	77.9%
07/11/2007	CH 110707	5	4,250	Est	73.0%
07/11/2007	HR 110707	11	10,100	Est	73.5%
08/11/2007	HR 110807	12	10,900	Est	78.4%
09/11/2007	CH 110907	26	21,000	Est	78.6%
09/11/2007	HR 110907	18	12,500	Est	78.6%
13/11/2007	CH 111007	14	16,500	Est	86.8%
14/11/2007	CH 111107	14	13,000	Est	86.8%
15/11/2007	CH 111207	17	0	Est	78.6%
16/11/2007	CH 111307	18	0	Est	78.6%
19/11/2007	CH 111407	18	0	Est	78.6%
20/11/2007	CH 111507	18	0	Est	78.6%
21/11/2007	CH 111607	18	0	Est	78.6%
23/11/2007	CH 111707	18	0	Est	78.6%
27/11/2007	CH 111807	18	0	Est	78.6%
28/11/2007	CH 112807	10	22080	Est	78.6%
30/11/2007	CH 113007	19	22080	Est	78.6%
05/12/2007	CH 120507	15	NONE	Est	78.6%



CHE HALIS WEAVER CREEK HATCHERIES PROGRAM 2007
INCOMING LOT PRODUCTION SUMMARY REPORT
UPDATED December 6th 2007

Harvest Date	Lot	Carrier	Weight (lbs)	Estimate	Recovery (%)	Green Wt. (lbs)	Finish Wt. (lbs)	Recovery (%)
05/10/07	WC 100507	4	1,500	Est	101.1%	0	0	0.0%
09/10/07	WC 100907	5	3,875	Est	69.4%	25	20	80.0%
15/10/07	WC 101507	7	930	Est	69.4%	9	9	51.7%
19/10/07	WC 101907	8	6,000	Est	73.7%	16	16	75.0%
22/10/07	WC 102207	12	9,700	Est	74.1%	34	34	74.6%
23/10/07	WC 102307	22	19,400	Est	72.1%	13,984	52	81.0%
24/10/07	WC 102407	12	9,950	Est	74.9%	0	45	78.6%
26/10/07	WC 102607	12	9,000	Est	70.4%	0	52	85.7%
29/10/07	WC 102907	12	10,000	Est	70.7%	0	63	84.5%
02/11/07	CH 110207	9	7,400	Est	73.6%	7	7	78.6%
05/11/07	CH 110507	12	9,900	Est	70.0%	39	39	86.4%
06/11/07	CH 110607	16	14,300	Est	74.6%	1,065	7	78.7%
06/11/07	HR 110607	15	13,100	Est	77.9%	22	6	77.9%
07/11/07	CH 110707	5	4,250	Est	73.0%	9	0	0.0%
07/11/07	HR 110707	11	10,100	Est	73.5%	64	8	76.9%
08/11/07	HR 110807	12	10,900	Est	78.4%	68	3	78.4%
09/11/07	CH 110907	26	21,000	Est	78.6%	58	2	78.6%
09/11/07	HR 110907	18	12,500	Est	78.6%	87	3	78.6%
13/11/07	CH 111007	21	16,500	Est	86.8%	58	8	86.8%
14/11/07	CH 111107	16	13,000	Est	86.8%	69	0	69.0%
15/11/07	CH 111207	51	121,700	Est	78.6%	0	0	0.0%
16/11/07	CH 111307	35	121,830	Est	78.6%	0	0	0.0%
19/11/07	CH 111407	22	118,540	Est	78.6%	0	0	0.0%
20/11/07	CH 111507	15	118,550	Est	78.6%	0	0	0.0%
21/11/07	CH 111607	8	118,550	Est	78.6%	0	0	0.0%
23/11/07	CH 111707	9	118,550	Est	78.6%	0	0	0.0%
27/11/07	CH 111807	28	220,800	Est	78.6%	0	0	0.0%
28/11/07	CH 112807	10	220,800	Est	78.6%	0	0	0.0%
30/11/07	CH 113007	19	220,800	Est	78.6%	0	0	0.0%
05/12/07	CH 120507	15	NONE	Est	78.6%	0	0	0.0%

WIP : Work in Process, Final weights pending completion of production

WIP : Work in Process, Final weights pending completion of production

Research guides best-use of inland salmon

- variable qualities and values from the inland catch
- late sockeye survival
- *Wild Salmon Policy* - chum escapement benchmarks



Partners:

- Watershed First Nations
- DFO
- Industry
- UBC
- SFU
- BCIT

Chehalis fisheries economic strategy: Build an environment for fisheries workers, communities, and their independent businesses to expand opportunities, skills and employment over a 6 month season from July - December



Chehalis investment in governance,
stewardship and our fishers

= sustainability of
our fisheries and
fishing communities

