

Taku River Tlingit Fisheries



FNFC Fall Fisheries Assembly

October 28th-30th, 2009

**Louise Gordon, TRTFN Fisheries and
Economic Development Director**

The Taku



- The TRT Traditional Territory includes the Taku drainage (Pacific) and portions of the upper Yukon River drainage (Arctic) an area of 38,614 km².
- It's pristine nature and diversity provides for an abundance of wild fish species and habitats.
- This presents a unique opportunity for proactive conservation.



Salmon Culture

Given the historical importance of salmon to our people, involvement in fisheries co-management remains a necessity.

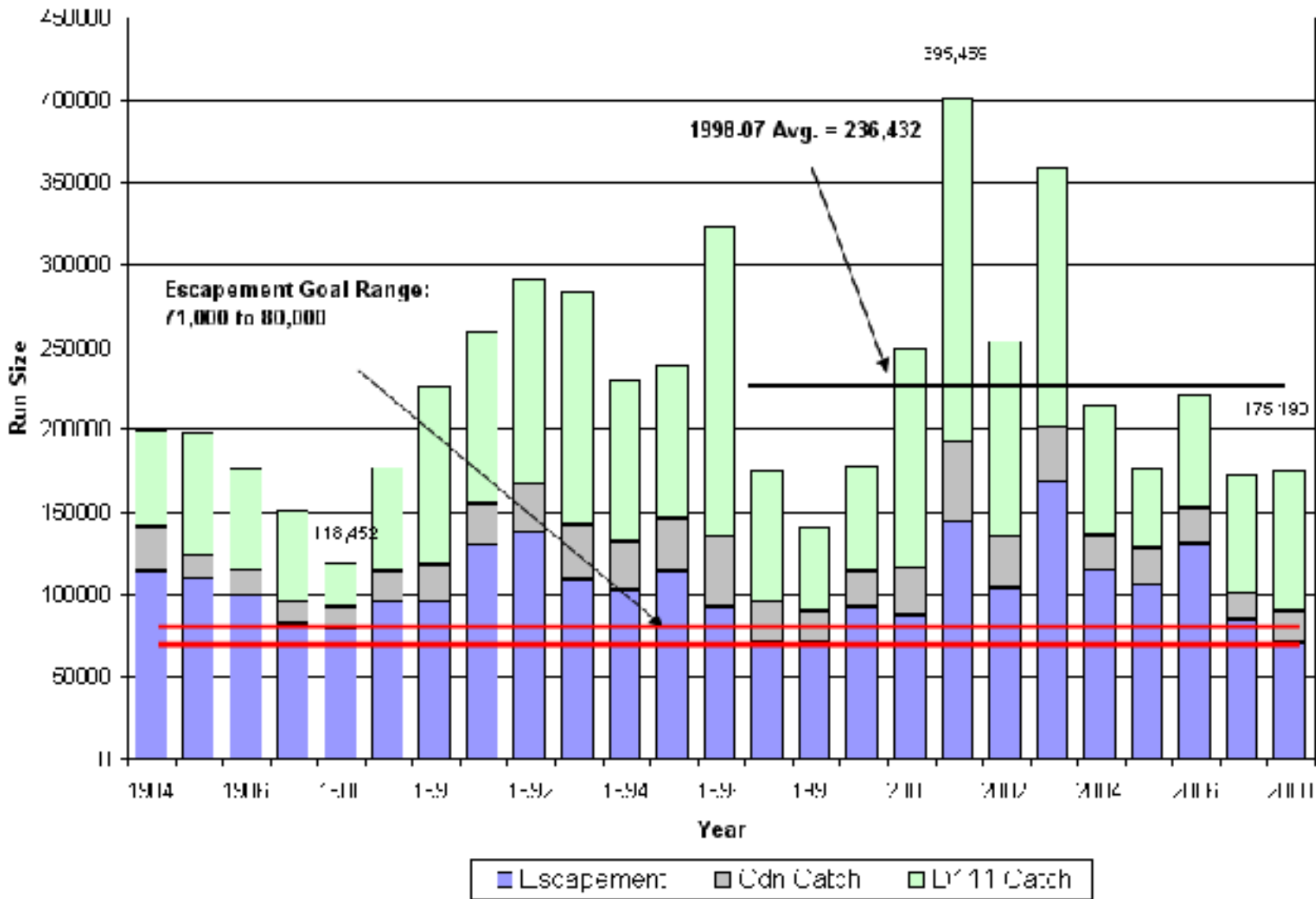


Main challenges

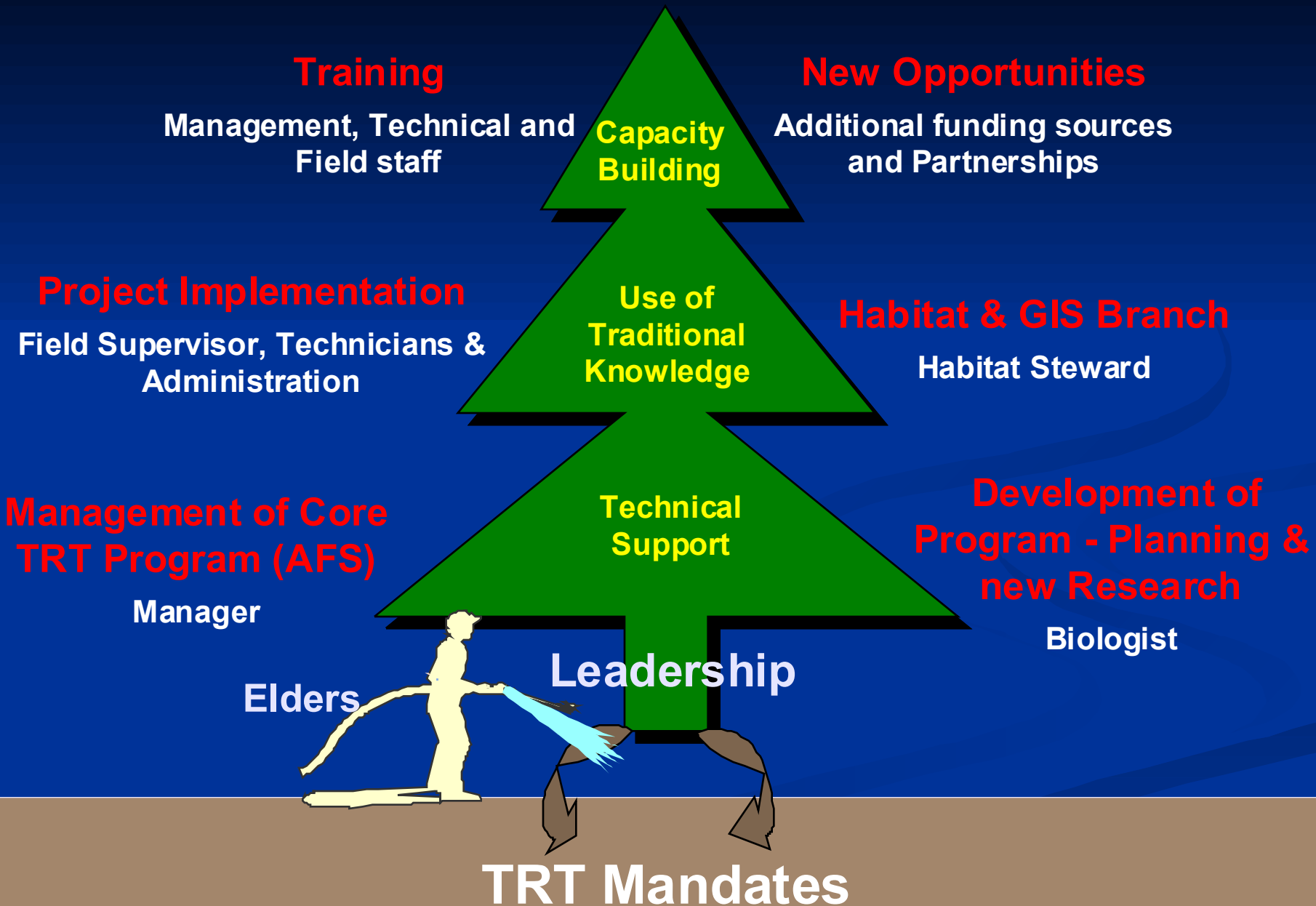
- Concerns of over fishing (i.e. Alaska has first access and takes largest harvest share and in some cases does not favour precautionary approaches to management)
- Potential impacts of industrial development
- Inadequate land and sustainability planning
- Addressing concerns regarding sockeye enhancement projects



Estimated Run Size of Taku River Sockeye 1984 to 2008



How we work internally....



Recognition of Rights & Title and management authority is ensured by being involved at various levels.



Political



**TRT
Mandates**

Planning

Projects

Fisheries Projects



- Core program projects include: operation of 2 live weirs and 1 carcass weir / involvement in tagging and marking
- Habitat studies and research
- GIS mapping of Traditional Knowledge (and technical information)
- Genetic sampling
- Food and Test Fisheries
- Enhancement Feasibility
- Conservation Areas Design
- Freshwater Projects (Atlin Lake Bio-monitoring & others)

New Planning initiatives:



- Community-based Fisheries Sustainability Plan completed (and presented in Ottawa)
- Economic Development Strategy and creation of Taku Wild
- Development of Vision and Management direction documents
- Initiating a Cooperative Land Planning process (ongoing)

External and political involvement:

Pacific Salmon Commission

- First Nations Caucus
- Tranboundary Panel
- Transboundary Technical Committee (& Enhancement Sub-Committee)



Court Cases

-
-

Other

- First Nation / DFO Government-Government
- Salmon Management Committee
- Aboriginal Fisheries Strategy
- Partnerships with other groups

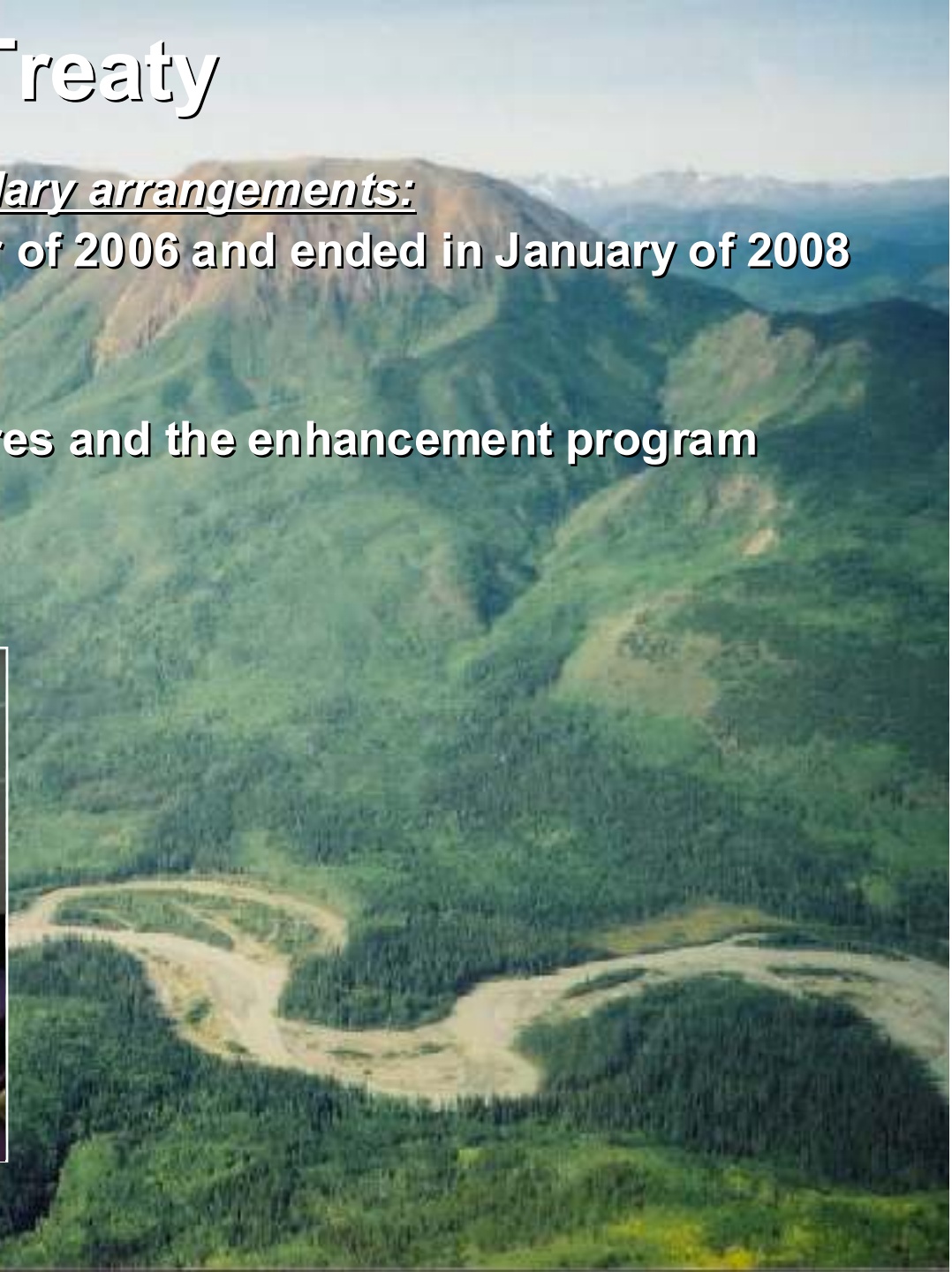
Pacific Salmon Treaty

Re-negotiation of Transboundary arrangements:

- Process started in October of 2006 and ended in January of 2008

Major Issues:

- Taku sockeye harvest shares and the enhancement program



PST - Sockeye Harvest Shares

Previous agreement:

- CAN harvest share of 18% wild and 50% of enhanced sockeye

New agreement:

- Sliding scale from 18% to 35% for CAN based upon enhanced sockeye production

Benefits of the new arrangement:

- Now a “blended” share for both wild and enhanced (which has benefits from a harvest and management perspective)

(Note: Favourable Chinook harvest share was negotiated previously)

PST – Enhancement Program

Previous agreement:

- 100,000 enhanced sockeye goal
- Locked into one specific project (Tatsamenie Lake) which was not producing and lead to some ethical concerns

New agreement:

- Diversification – ability to pursue other projects (not locked in)
- Planning – Taku Enhancement Prod. Plan (TEPP)
- Project review process updated to include risk analysis / specified timelines and thresholds for major decisions.
- Panel to consider knowledge of local economic, social, and cultural conditions and values when making recommendations for enhancement projects.



Main avenues of co-management success

- Involvement PSC level and development of G2G forum
- Proactively initiating Sustainability and Land Planning processes
- Engaging in court challenges when necessary
- Creating new field projects and habitat protection initiatives
- Incorporation of Traditional Knowledge
- Finding common conservation principles upon which to develop positive working relationships



'Gunalchish'



Taku River Tlingit
Fisheries

