

# Protected Areas: A Strategy to Address Fisheries Access ?

**Russ Jones and Paul Pearson**

**Council of the Haida Nation**

**Fall Fisheries Assembly**

**30 September 2009 . Chehalis**

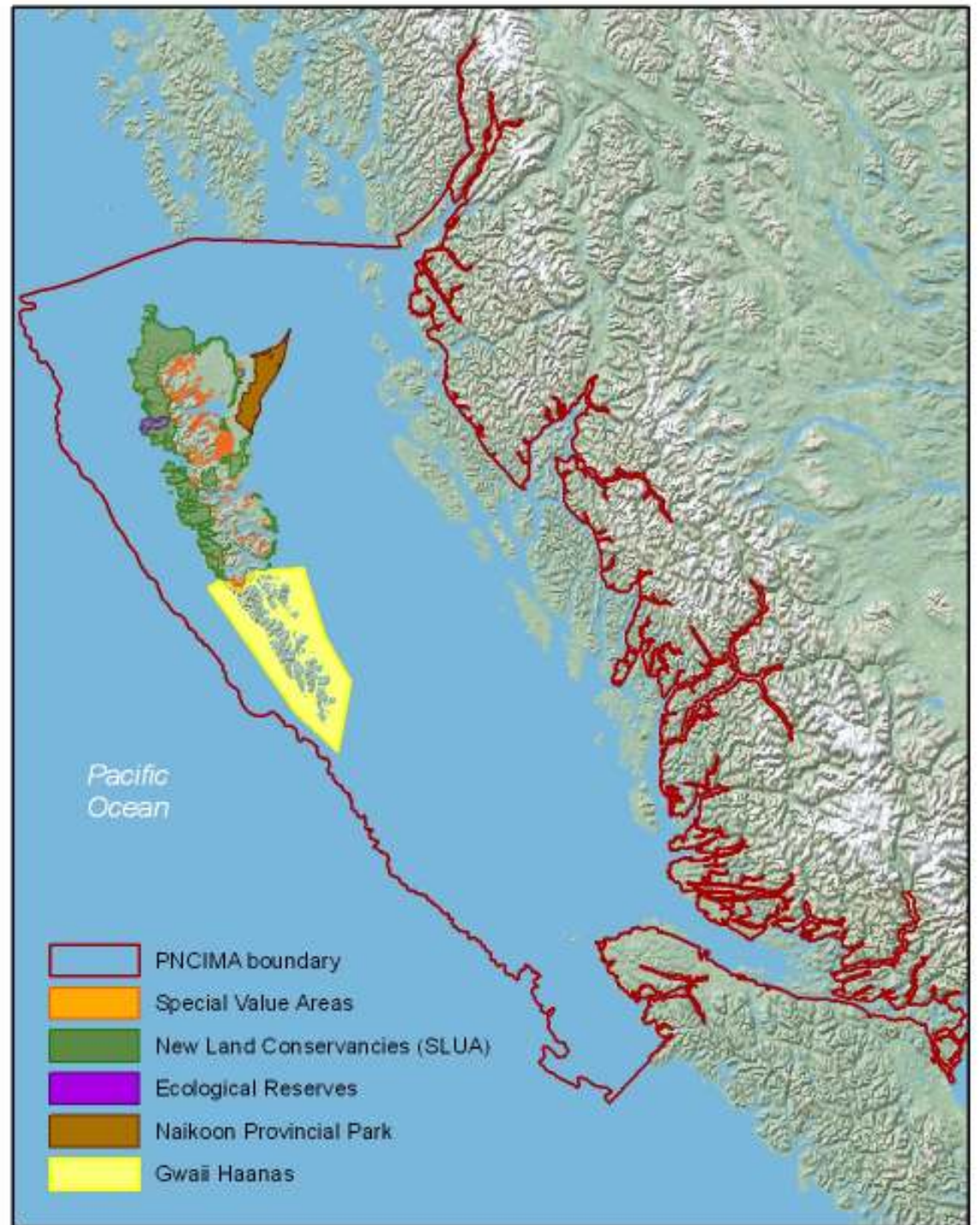
# Outline

- Three Examples of Haida Protected Areas
  - Strategic Land Use Agreement
  - Integrated Marine Use Planning (PNCIMA)
  - Gwaii Haanas Marine Area



# Location of Haida Protected Area Initiatives

Now includes:  
52% of Land Area  
& 74% of Shoreline  
of Haida Gwaii

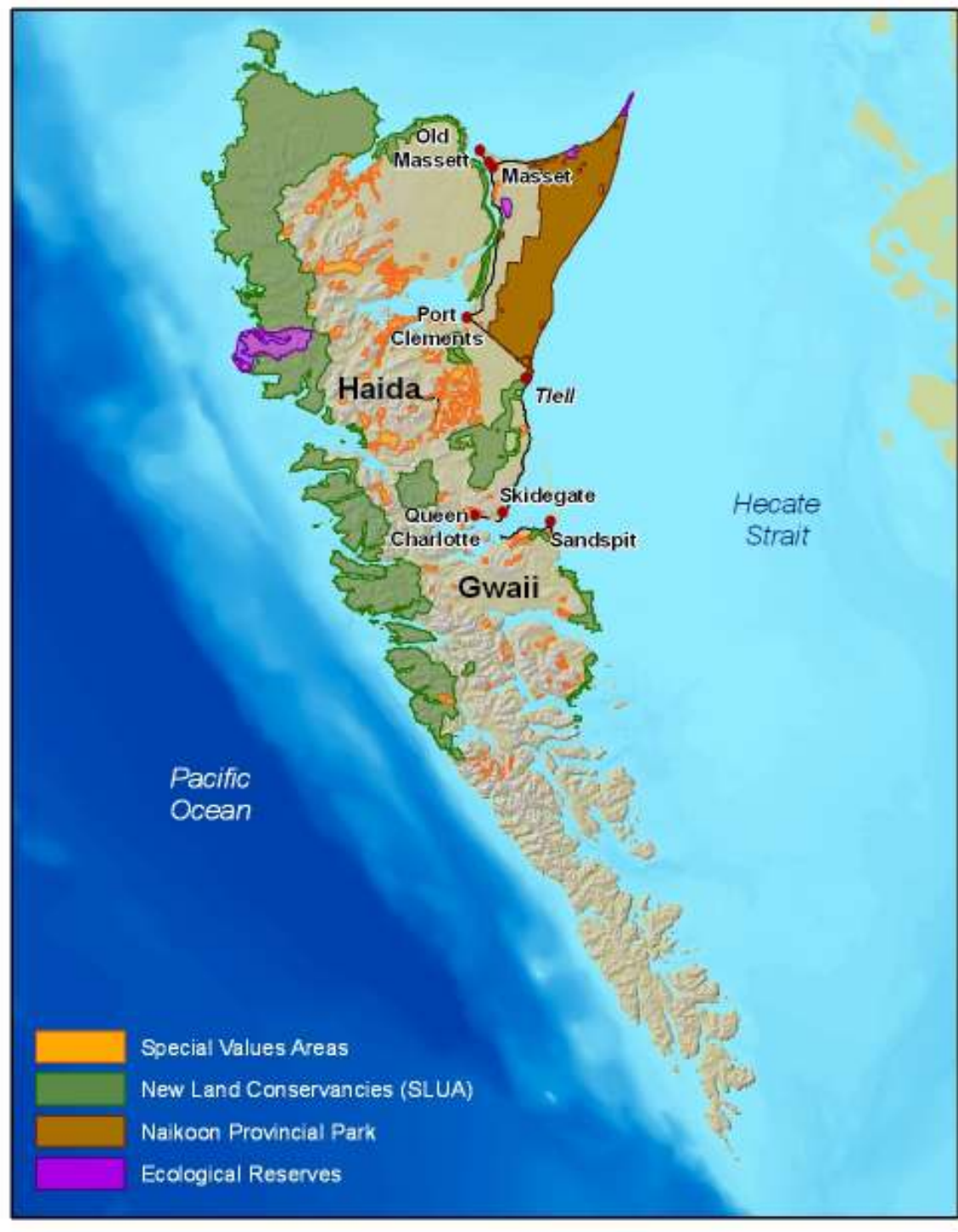


# 1.

## **Strategic Land Use Agreement**

- Signed by Council of Haida Nation and BC in December 2007
- Reduced the annual cut
- Increased protection of riparian areas
- Committed to new terrestrial protected areas and adjacent marine conservancies
- Now being implemented

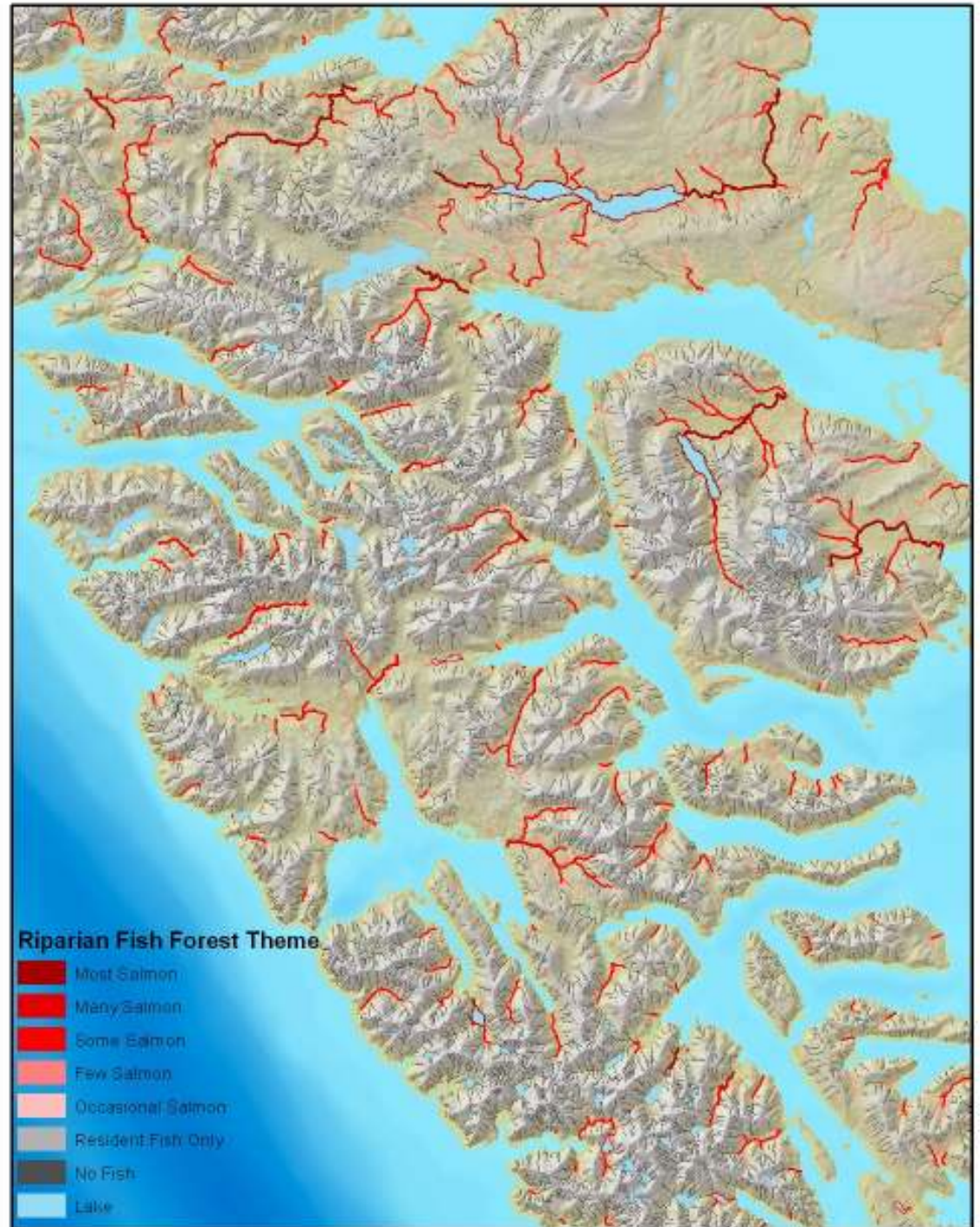
**New Land  
Conservancies  
shown.  
Boundaries for  
adjacent  
Marine  
Conservancies  
under  
discussion.**



# Streamside protection:

SLUA expands reserve zones by 3-4 times

Protected an additional 60,000 ha

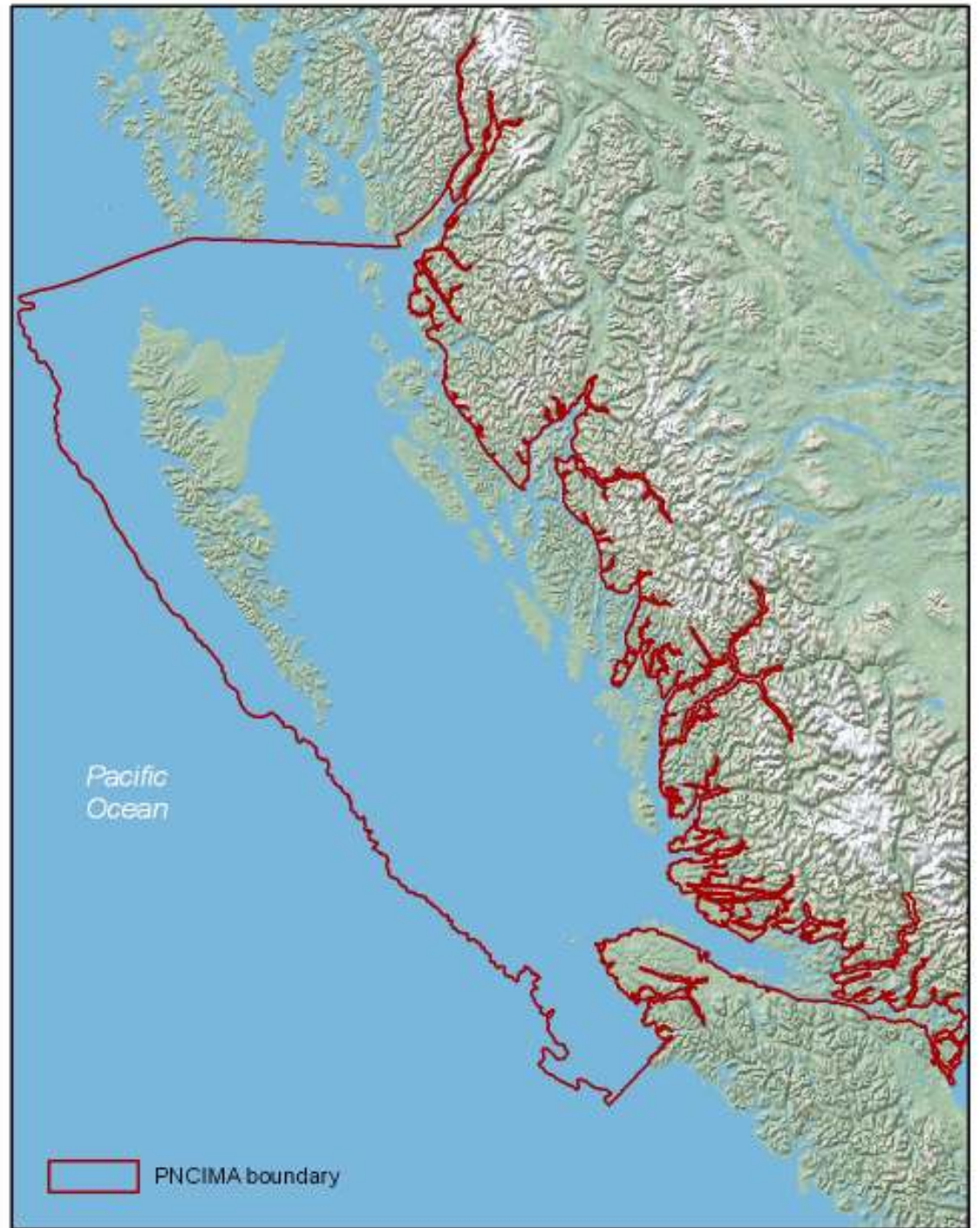


# Impact on Fisheries Access

- Protects salmon streams & nearshore habitat
- Co-management of marine conservancies
- Coast Opportunity Funds support conservation and economic development



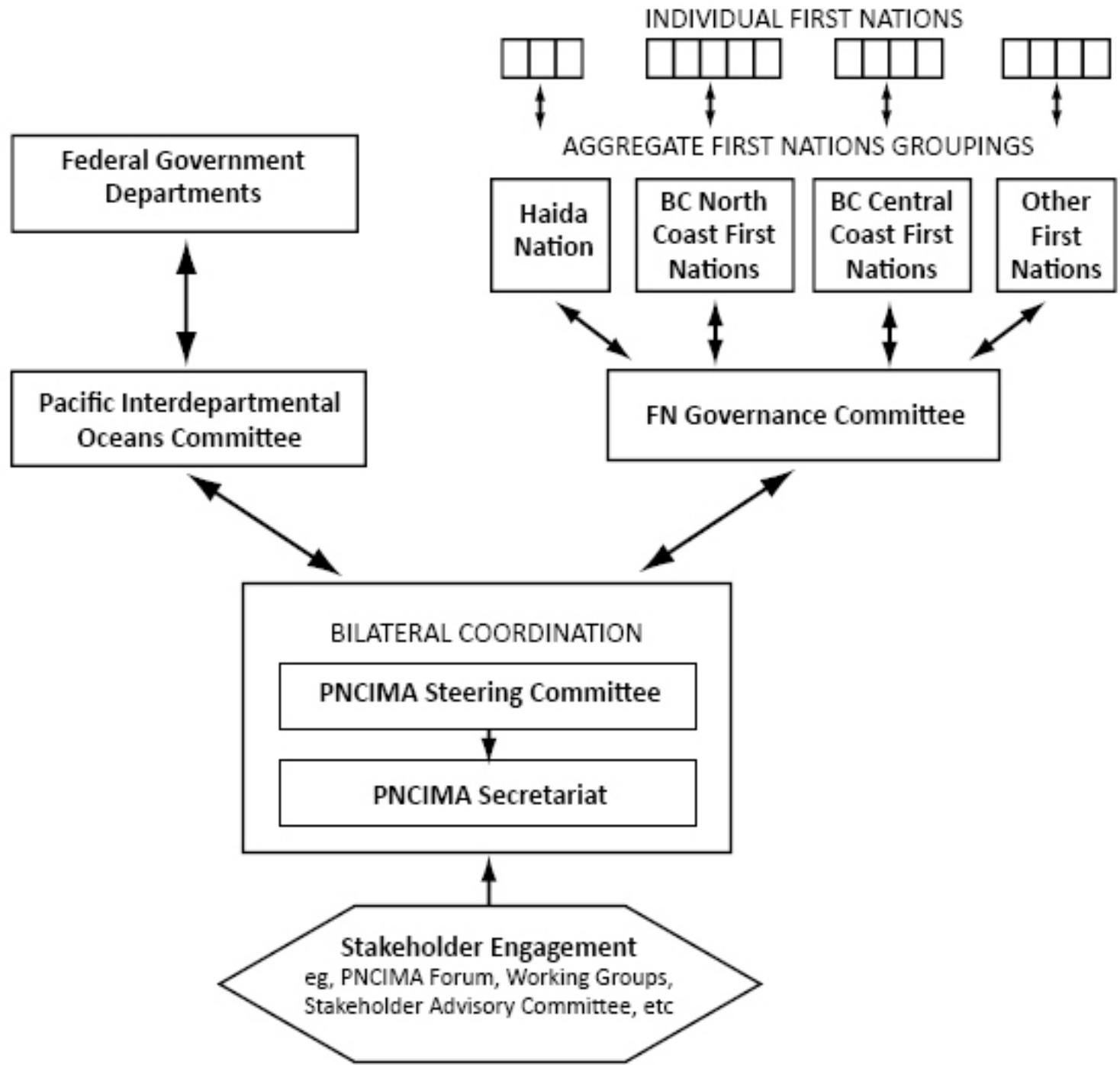
## 2. Pacific North Coast Integrated Management Area



# Integrated Marine Use Planning

- Working with DFO and First Nations on BC North Coast and Central Coast
- Purpose is to develop integrated marine use plans under the *Oceans Act*
- MoU on PNCIMA governance signed by DFO and First Nations in December 2008

# PNCIMA Planning Process



# Haida Marine Work Group

- 8 members & 6 alternates
- Made up of CHN, HFC, Hereditary Chiefs, OMVC, SBC, Haida Public



# Impact on Fisheries Access

- Will protect long term health of ecosystems
- Opportunity for co-governance
- Will address economic sustainability



3.

## Gwaii Haanas

Haida Heritage Site;

National Park Reserve; and

Proposed National Marine Conservation Area



# History

- Co-managed the land area since 1993
- Archipelago Management Board has 2 Haida and 2 Parks Canada representatives. Decisions by consensus.
- Haida make up 20 out of 40 Parks employees; Watchman Program employs 37

# Steps in Marine Area Establishment

- Agreement between CHN – Parks – DFO being negotiated
- Consultation with stakeholders started in fall 2008
- Expect Interim Management Plan to go to Parliament this fall

# Impact on Fisheries Access

- Key principle is ecologically sustainable use
- Has to include a zone of full protection
- Haida will be involved in management planning including fisheries



The end



Fisheries Assembly, October 2009 . Chehalis